



[Ver.2024.01.03.]

무대 기술 정보 안내

STAGE TECHNICAL SPECIFICATIONS

대학로예술극장

DAEHAKRO Arts Theater

대극장

Main Hall

1. General Information



• Proscenium Stage

- Width 12.6m
- Depth 25.5m (The distance from the pit line to the back wall of the back stage)
- Proscenium Height 7.6m
- Main Stage Height 17m
- Back Stage Height 14m

※ Adjust the opening of the proscenium

Use pull out the opening as much as possible 9.4m

• Total Auditorium seats 485 (Including 6 wheelchair seats)

- 1st Floor 323
- 2nd Floor 162

Wheelchair seats are on the 1st floor.

• Stage Manager Desk

- Location : Stage right **Stage Manger Desk can't change the location**
- Available the wired and wireless intercom, walkie-talkie, paging system
- Monitor (Infrared camera)

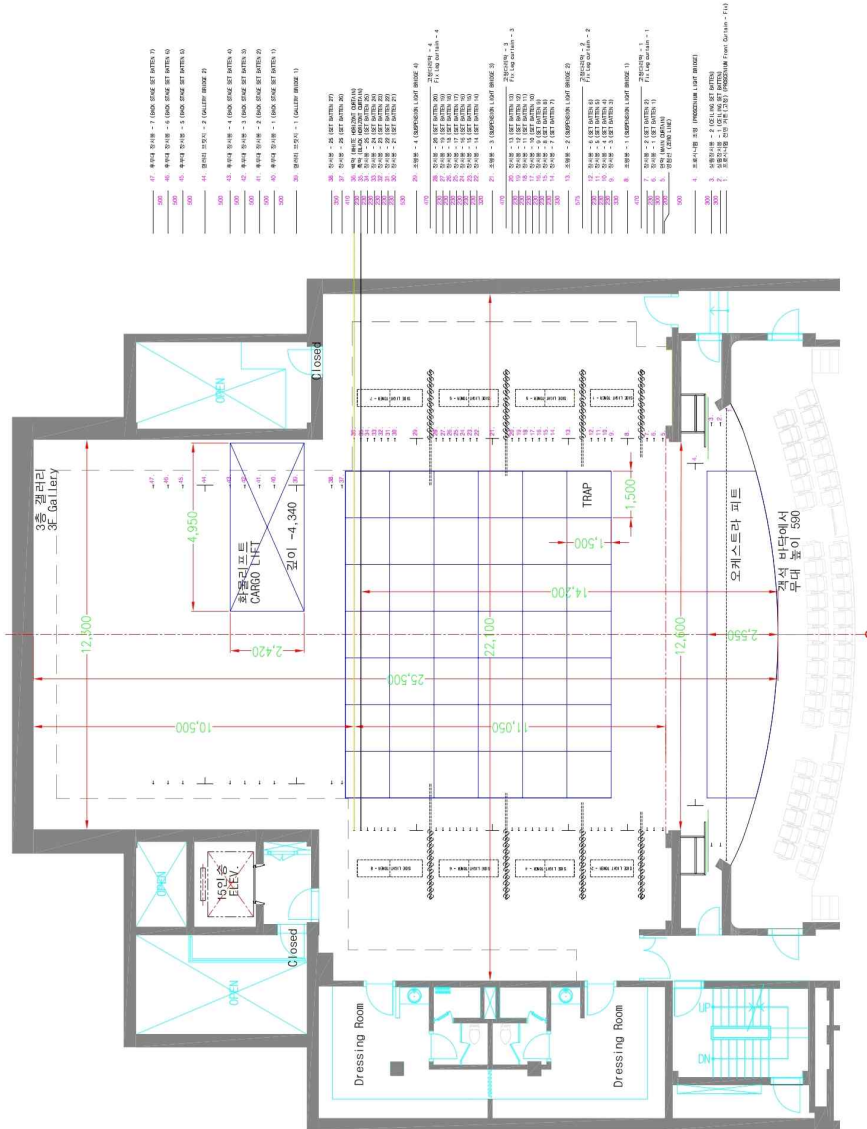
• All equipment and goods in the theater can be moved after consultation in advance.



1-2. General Information 2

노트 (NOTES)

- 프로시니엄 너비 12,600 높이 7,600
본무대선에서 백막까지의 거리 11,050
본무대 면적 $12,600 \times 11,050 = 139,230\text{m}^2 = 42.1\text{평}$
- 후무대 너비 12,300
후무대 깊이(백막에서 뒤 벽까지) 10,500
후무대 면적 $12,300 \times 10,500 = 129,225\text{m}^2 = 39.1\text{평}$
- 오케스트라 피트 면적 $26.25\text{m}^2 = 7.9\text{평}$
오케스트라 피트 최고 깊이 -3,180
오케스트라 피트 하중 2,000kg
- 본무대 바닥에서 그라운드까지 높이 18,940
후무대 바닥에서 그라운드까지 높이 16,750
본무대 바닥에서 트랩 아래까지 깊이 -2,250
- 화물리프트 크기 4,950*2,420 깊이 -4,340
화물리프트 면적 $11,98\text{m}^2 = 3.6\text{평}$
화물리프트 하중 2,000kg
- 객석 2층 프로젝터 선반에서 메인커튼까지 거리 13,400
축막까지 거리 23,800
후무대 뒤 벽까지 거리 35,000
- 객석 1층 프로젝터 선반에서 메인커튼까지 거리 14,400
축막까지 거리 24,800
후무대 뒤 벽까지 거리 36,000
- 오케스트라 피트 앞 선에서 축막까지 거리 14,200
후무대 뒤 벽까지 거리 25,500
- 실링에서 메인커튼까지 거리 11,200
실링에서 메인커튼까지 거리 16,520
사이드 브릿지 최대 높이 6,000
- 후무대 갤러리 브릿지 최대 높이 13,500
후무대 세트 배는 최대 높이 14,000
- 3층 갤러리 사이드 배는 높이 5,300
프론트 사이드 높이(바닥에서 시작 부분까지) 3,600
총 높이(시작 부분부터 최고 높이) 5,130
- 발코니 높이 2,500
음향부스에서 메인스피커까지 거리 12,000
음향부스에서 메인커튼까지 거리 14,500
객석 제일 번째 앞 열에서 스피커까지 거리 3,000
객석 제일 뒤 열에서 스피커까지 거리 12,000
- 본무대 장치용 1번~27번 하중 500kg
후무대 장치용 1번~7번 하중 500kg
- P.B 하중 1000kg
본무대 조명용 1번~4번 1,600kg
후무대 조명용 1번, 2번 500kg
- 호이스트 길이 14,400
호이스트 하중 2,000kg



6.P
3/3
대학로예술극장 대극장
SCALE: A1/1/75



2. Working Policy

- Work schedule

	A.M	Break time	P.M	Break time	Night	Deadline
Start	09:00	12:00	13:00	17:00	18:00	22:00
End	12:00	13:00	17:00	18:00	22:00	

※ In the case of dinner time, if there is a Night rental, consultation are available between 17:00~18:00 or 18:00~19:00

- Safety helmet

Sortation		Place	
		Auditorium	Stage
Set up		When you work on ceiling, 2 nd Floor, balcony : Must-wear	Must-wear
		When there's no console booth or top work : Don't wear	
Rehearsal	Upper part and fixing focusing	Don't wear	Must-wear
	Technical and Dress rehearsal	Don't wear	Don't wear
Show		Don't wear	Don't wear
Withdrawal		When you work on ceiling, 2 nd Floor, balcony : Must-wear	Must-wear
		When there's no console booth or top work : Don't wear	

- Type A ladder

- Common information

- A. Must sure to wear a safety helmet when working on ladders
- B. It can only be installed on a flat, sturdy, non-slip floor
- C. Must have to work in pairs

- The height that you can be able to work on (Based on the foothold with feet)

Height	Forbidden work
Less than that 1.2m~2m	Can't work on the top footstep
More than 2m less than 3.5m	Wearing harnesses, Can't work on the top and second top footstep
Excess 3.5m	Do not use

- Flame retardant finish

- After flame retardant finish, submit your test report (Within 2 years)
- Safety check at the site

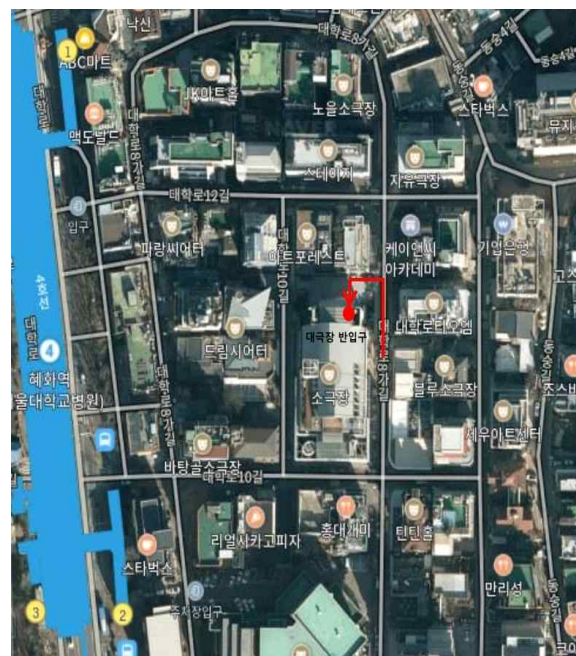
- Special effects

- Decide after prior consultation with the theater

3. Loading Dock



- **Size**
 - The outer door : 4,000(W) × 2,230(H)
 - An inner door : 3,840(W) × 2,200(H)
 - Cargo lift : 4,950(W) × 2,420(D)
- **The height of loading dock is 780mm based on the road**
- **Can't use it when a small hall is performing**
- **Location – DAEHAKRO Arts Theater parking lot**





4. Over Stage (Fly Plot 1)

• Main Stage

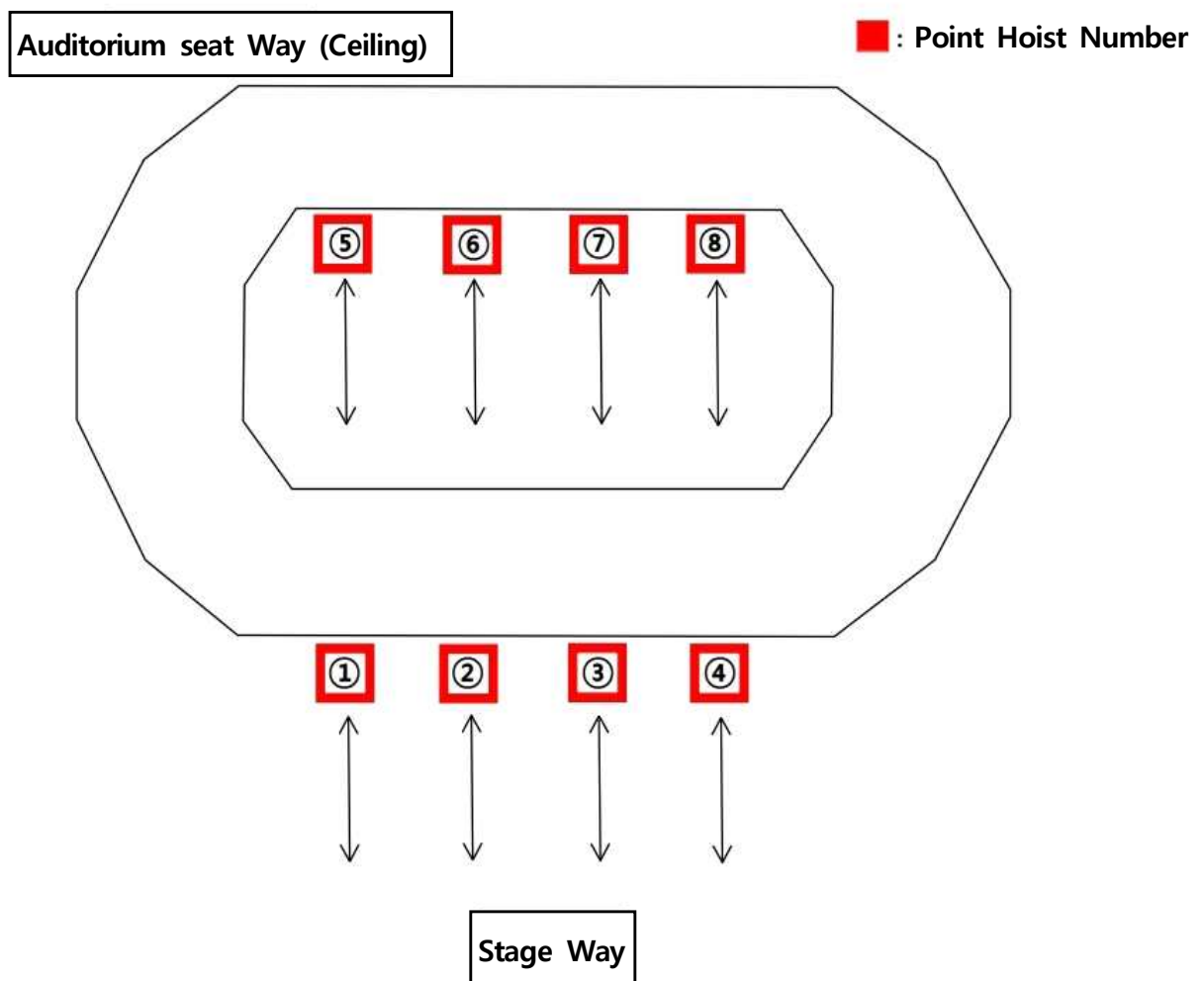
Name	Size (mm)	Load (kg)	Speed (m/min)	Note
CEILING 1~2	13,600	500	12	
PROSCENIUM BRIDGE	11,000(W)×400(D)×1,500(H)	1,000	9	
PROSCENIUM TOWER	1,900(W)×900(D)×8,500(H)	-	-	
MAIN CURTAIN	12,600(W)×8,500(H)	500	1-70	
SET BATTEN 1	12,600	500	1-70	
SET BATTEN 2 (HEAD CURTAIN)	12,600 12,600(W)×4,500(H)	500	1-70	Head Curtain
SUS LIGHT 1	12,600(W)×450(D)×900(H)	1600	6	
SET BATTEN 3	12,600	500	1-70	
SET BATTEN 4	12,600	500	1-70	
SET BATTEN 5	12,600	500	1-70	
SET BATTEN 6 (HEAD CURTAIN)	12,600 12,600(W)×4,500(H)	500	1-70	Head Curtain
SUS LIGHT 2	12,600(W)×450(D)×900(H)	1600	6	
SET BATTEN 7	12,600	500	1-70	
SET BATTEN 8	12,600	500	1-70	
SET BATTEN 9	12,600	500	1-70	
SET BATTEN 10	12,600	500	1-70	
SET BATTEN 11	12,600	500	1-70	
SET BATTEN 12	12,600	500	1-70	
SET BATTEN 13 (HEAD CURTAIN)	12,600 12,600(W)×4,500(H)	500	1-70	Head Curtain
SUS LIGHT 3	12,600(W)×450(D)×900(H)	1600	6	
SET BATTEN 14	12,600	500	1-70	
SET BATTEN 15	12,600	500	1-70	
SET BATTEN 16	12,600	500	1-70	
SET BATTEN 17	12,600	500	1-70	
SET BATTEN 18	12,600	500	1-70	
SET BATTEN 19	12,600	500	1-70	
SET BATTEN 20 (HEAD CURTAIN)	12,600 12,600(W)×4,500(H)	500	1-70	Head Curtain
SUS LIGHT 4	12,600(W)×450(D)×900(H)	1600	6	
SET BATTEN 21	12,600	500	1-70	UPPER Interferingism
SET BATTEN 22 (UPPER LIGHT)	12,600	500	1-70	UPPER LIGHT
SET BATTEN 23	12,600	500	1-70	UPPER Interferingism
SET BATTEN 24	12,600	500	1-70	
SET BATTEN 25	12,600	500	1-70	
BLACK CYC	12,500(W)×9,500(H)	-	1-70	
WHITE CYC	12,500(W)×9,500(H)	-	1-70	
SET BATTEN 26	9,500	500	1-70	
SET BATTEN 27 (HEAD CURTAIN)	9,500 9,500(W)×4,500(H)	500	1-70	Head Curtain

4-2. Over Stage (Fly Plot 2)

• Rear Stage

Name	Size (mm)	Load (kg)	Speed (m/min)	Note
GALLERY BRIDGE 1	9,000(W)×500(D)×900(H)	500	6	
BACK SET BATTEN 1	9,000	500	12	
BACK SET BATTEN 2	9,000	500	12	
BACK SET BATTEN 3	9,000	500	12	
BACK SET BATTEN 4 (HEAD CURTAIN)	9,000 9,000(W)×3,500(H)	500	12	Head Curtain
GALLERY BRIDGE 2	9,000(W)×500(D)×900(H)	500	6	
BACK SET BATTEN 5	9,000	500	12	
BACK SET BATTEN 6	9,000	500	12	
BACK SET BATTEN 7 (DRAW CURTAIN)	9,000 7,700(W)×5,500/5,600(H)	500	12	Draw Curtain
SIDE BRIDGE 1~8	2,000(W)×500(D)×1,000(H)	900	6	
POINT HOIST	-	2000	6.5	

• Point Hoist



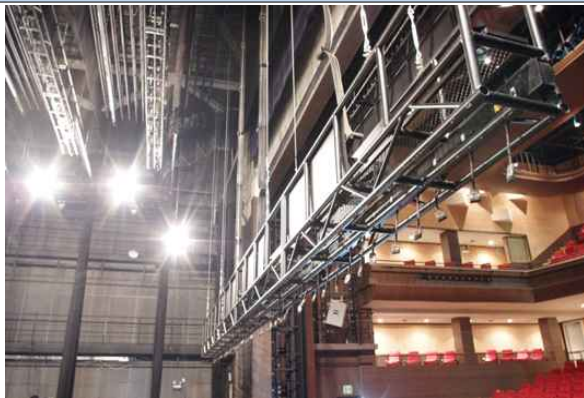
4-3. Over Stage (Batten)

SET BATTEN



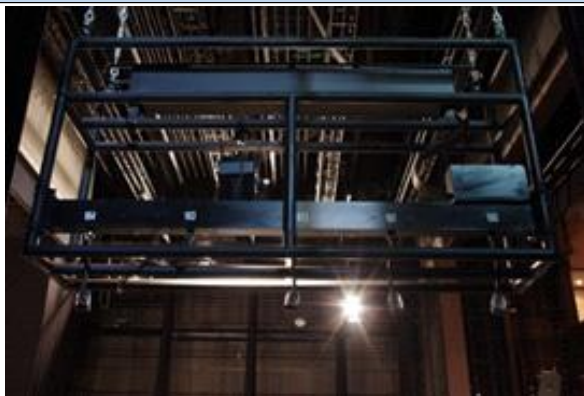
- Can control the location
- SET BATTEN can control the driving speed
- Max Driving speed 70m/min
- BACK SET BATTEN #1~7 can't control the speed but can control the location

SUS LIGHT



- Can control the location
- Can't control the driving speed

SIDE LIGHT



- Can control the location
- Can't control the driving speed

4-4. Over Stage (Curtain 1)

The following drop are allocated to the theater.

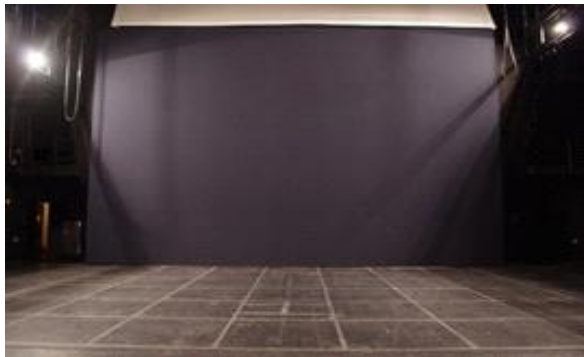
MAIN CURTAIN



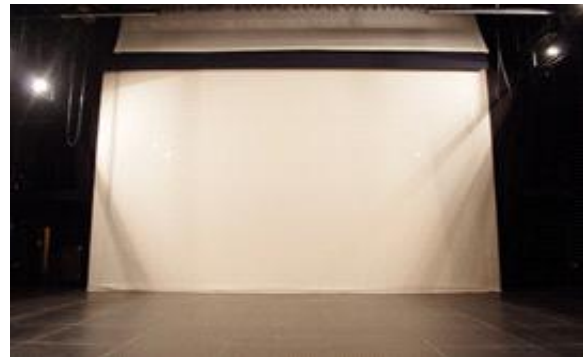
DRAW CURTAIN (Rear stage)



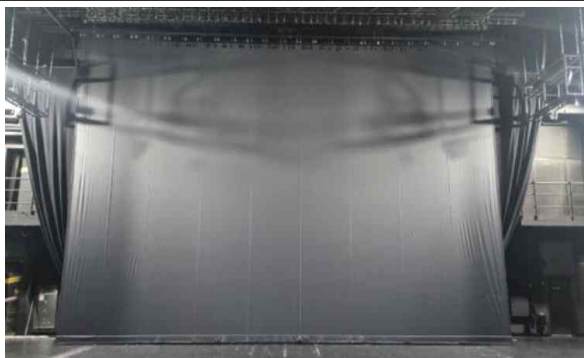
BLACK CYC



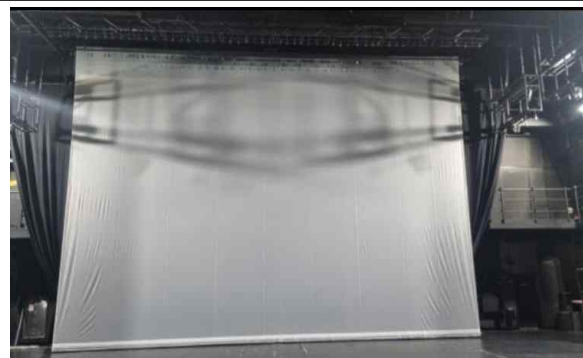
WHITE CYC



BLACK SCREEN



WHITE SCREEN



BLACK TRANSPARENT DROP



WHITE TRANSPARENT DROP

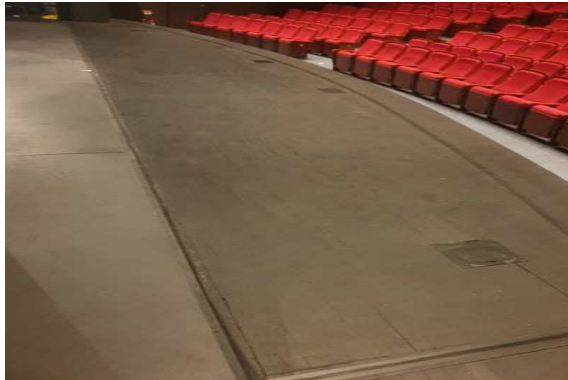


4-5. Over Stage (Curtain 2)

HEAD CURTAIN 1					
	Size	12,600mm × 4,500mm			
	Quantity	4			
	Color	Black			
	Material	Wool Serge			
	Note	#2,6,13,20 Basic setting (Can change it.)			
HEAD CURTAIN 2					
	Size	10,000mm × 3,500mm			
	Quantity	2			
	Color	Black			
	Material	Wool Serge			
	Note	#27, #BS4 Basic setting (Can change it.)			
LEG CURTAIN					
	Size	5,000mm × 8,000mm			
	Quantity	4 pair			
	Color	Black			
	Material	Wool Serge			
	Note	The height is fixed. The width is adjustable. (Manual)			
OTHER CURTAIN					
Main stage DRAW CURTAIN 1	8,300mm × 6,800mm 8,300mm × 6,500mm	storage	BLACK SCREEN	12,400mm × 8,500mm	#24 Basic setting (Can change it.)
Main stage DRAW CURTAIN 2	8,400mm × 6,800mm 8,400mm × 6,500mm	storage	WHITE SCREEN	12,400mm × 8,500mm	#25 Basic setting (Can change it.)
Rear stage DRAW CURTAIN 1	8,000mm × 5,500mm 8,000mm × 5,600mm	storage	BLACK TRANSPARENT DROP	12,600mm × 8,500mm	storage
LEG CURTAIN	8,300mm × 1,950mm 8,400mm × 1,950mm	1 pair	WHITE TRANSPARENT DROP	12,600mm × 8,500mm	storage

5. Floor Machinery

• Orchestra pit



- Size 10.58m(W) × 2.55m(D)
- Type Spiral Lift
- Travel -3,180mm
- Road 2,000kg
- Travel time 3m/min (Max speed) About a minute

※ Can control the location and driving speed.

※ **Can't use it when a small hall is performing.**

• Stage Trap



- Size 1,500mm × 1,500mm / 42 in total (6×7)
- Travel -2,250mm
- Thickness 48mm

※ **There is no lift at the under stage trap.**

If necessary lift, you should prepare separately.



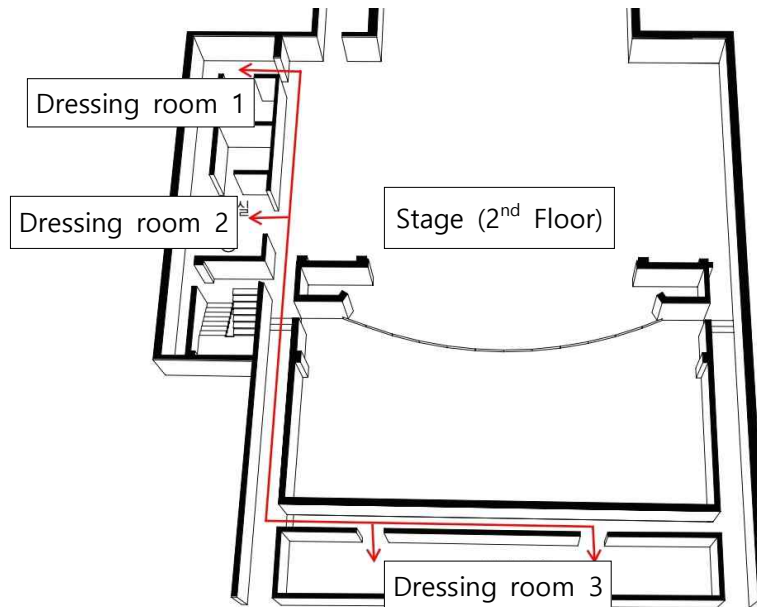
6. Platform

※ Only the quantity held in the theater should be used, but it can be moved **within DAEHACKRO Arts theater Main Hall and Small Hall** in consultation with the stage manager in charge.

Standard (size : cm)	Quantity
1×2 (30×60)	1
1×3 (30×90)	5
1×4 (30×120)	2
1×6 (30×180)	2
2×2 (60×60)	0
2×3 (60×90)	3
2×4 (60×120)	3
2×6 (60×180)	5
3×3 (90×90)	3
3×4 (90×120)	2
3×6 (90×180)	9
3×9 (90×270)	5
4×6 (120×180)	12
4×9 (120×270)	4
6×6 (180×180)	6
6×9 (180×270)	2
Apple box (30×45)	50
Stairway (90×90)	2
T = 15cm	

7. Dressing Room

• Location



※ **Dressing room 1,2** : The room is connected. If you want to use the room separately, you need to prepare a door-sized curtain.

※ **Dressing room 3** : It is connected to the lobby on the 2nd floor and is under the auditorium seat.

• Facility

Dressing room	location	Number of people used	Shower	Toilet	Note
1	2 nd floor	10 people	○	○	Located stage right
2	2 nd floor	10 people	○	○	Located stage right
3	2 nd floor	16 people	X	X	Located lobby of 2 nd floor

Reference Picture



Dressing room 1,2



Dressing room 3